

# 4D Quick Font Tutorial©

*By Hope Yoder*




Are you looking for something FUN to make? I have just the thing for you-Free standing Tag's & charms. Perfect to give as gifts. The charms can be used as zipper pulls or to mark your scissors, dangle, rotary cutter and other things that disappear during a sewing class. Here's what a Bernina Dealer wrote me about this collections:

**“Hi Hope,. I LOVE the Tag-A-Longs!!! We are leaving today for Bernina University and I made a flip flop tag for each of my employees that are going with me. What a pleasurable and fun project. It made me laugh to have so much fun while sewing. I really, really like the project and the directions were very clear and concise. Keep up the good work! L.P. from Ohio”**

[Click Here](#) To See the “Tag-A-Long” Embroidery Collection. Two 5” x 7” badges are included that are intended to be worn around your neck. I travel teaching sewing workshops & often get the ugly paper name badges in clear sleeves that I am to wear around my neck. Why not make your own pretty name badge using your favorite fabrics. P.S. my pretty silver neck chain is from Brighton™ (it's a nurse's badge holder for about \$30.00.)



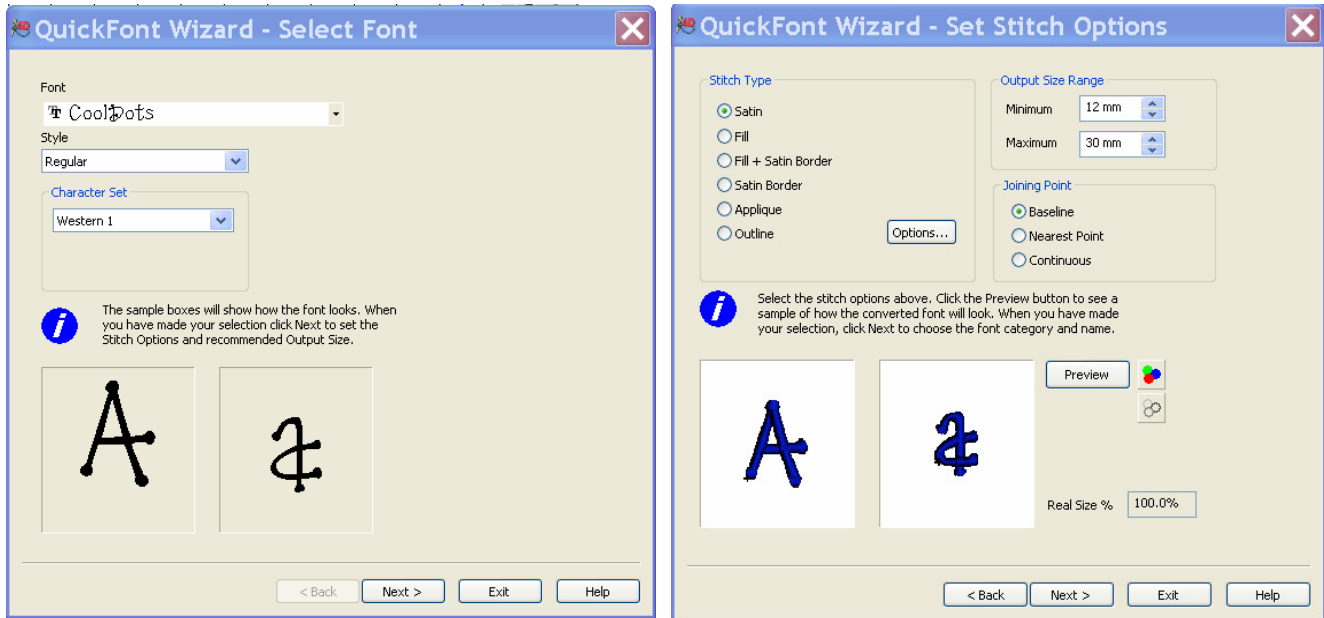
Personalize your tags by adding fonts from your embroidery software. I imported “Curlz MT” font using 4D. Below is a quick tutorial on generating

“Quick Font’s”  using 4D Embroidery Software. Open 4D & bring in design “Badge2”.

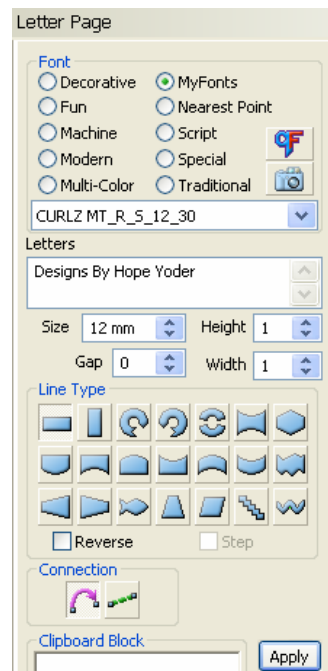
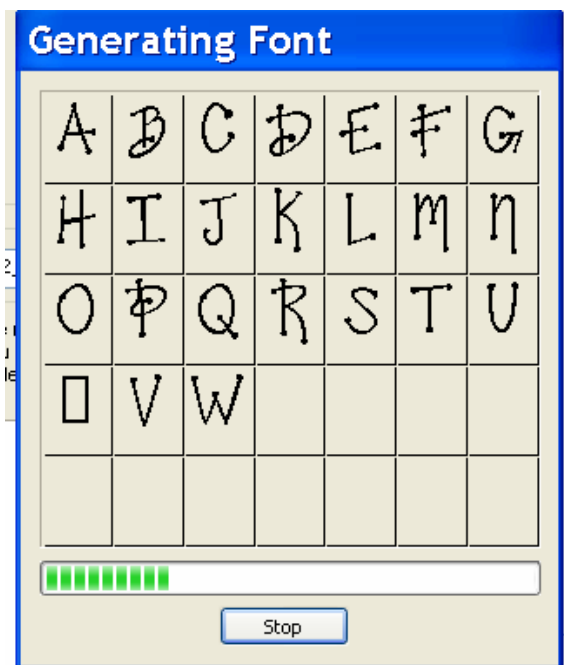
©Designs By Hope Yoder, Inc.

## Quick Fonts Tutorial

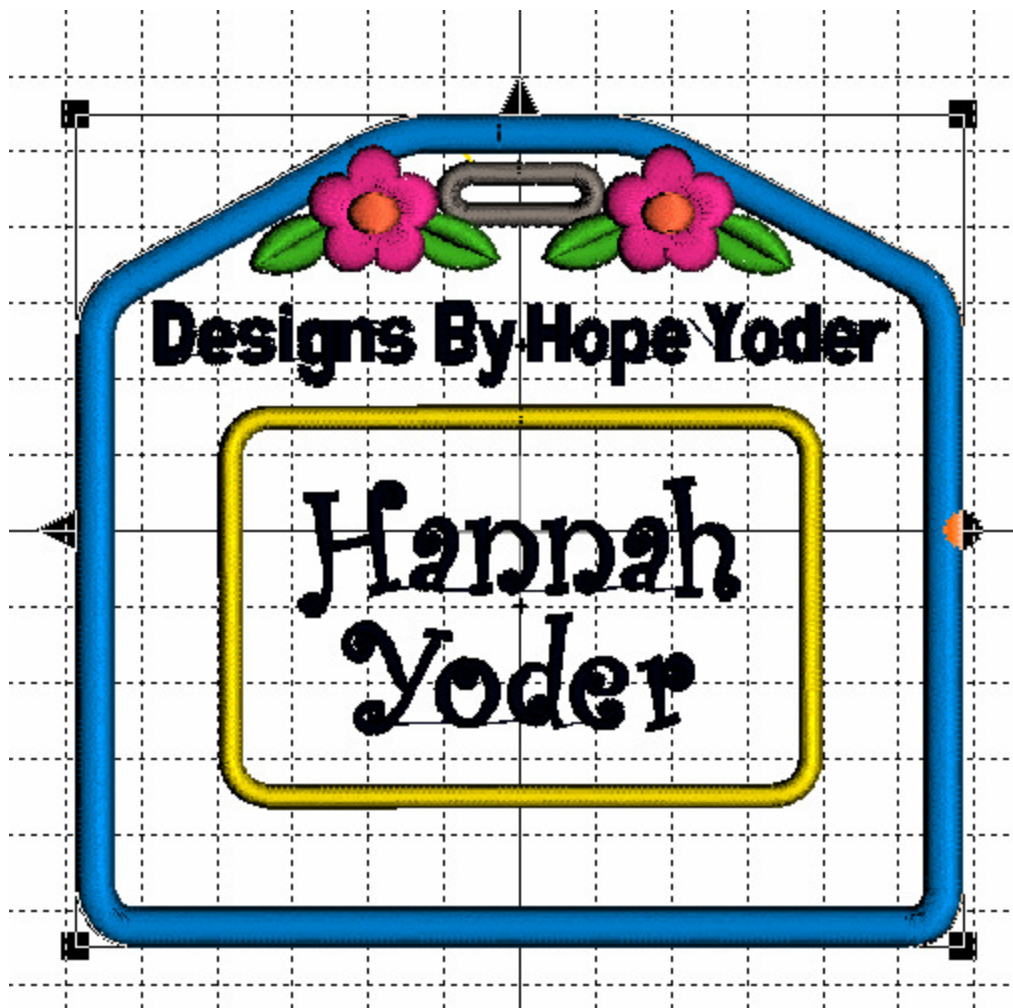
1. Click on Quick Fonts Icon 
2. Quick Font Wizard Open & in the first drop down box, select the font you want to import (I've selected Cool Dots). Select next on the bottom of the screen."



3. "Set Stitch Options"- use the default settings (satin, output size range 12-30mm...). Select preview button & then next on the bottom of the screen.
4. 4D will generate your new fonts & select the default setting to save them to 'My Fonts' window.



5. To use the new fonts- Click on the bottom right "Letters Tab". Select "My Font's" and choose your new font. Type in the text you want to appear and select "apply".
6. "Badge2" has room above the appliqué patch for a company name. Move your text there. Go back to letters & create another name. Color sort each grouping of letters. Save your new design & have fun sewing!



**Thank you for purchasing quality designs by Hope Yoder, Inc.**

